



jordan fishwick

WEST DIDSBURY
Brankgate Court



Brankgate Court, West Didsbury, M20 2PD

£235,000



The Property

A SPACIOUS, TWO DOUBLE BEDROOM, TOP FLOOR APARTMENT FORMING PART OF A PURPOSE BUILT DEVELOPMENT WITH GATED PARKING AND AN EXCELLENT LOCATION, BEING WITHIN A SHORT STROLL OF BURTON ROAD. 685 sq ft. The vibrant shops, bars and restaurants of West Didsbury, along with the Metrolink are all close at hand. Large double glazed windows provide light & well presented and recently refurbished living space including a lovely open plan living/kitchen area, two excellent double bedrooms with built-in storage and the bathroom with white suite. In addition, there is a shared storage area & bin chute, separate/private garage, enclosed communal garden, well tended grounds and gated residents parking. *No onward chain*

Directions

M20 2PD



- Two double bedroom apartment
- Great location in West Didsbury
- Lounge/dining room with separate kitchen
- Recently refurbished
- Private gated parking
- Separate garage
- Bathroom with white suite
- Double Glazing
- Close to Burton Road & Metrolink
- No chain

Postcode - M20 2PD

EPC Rating - D

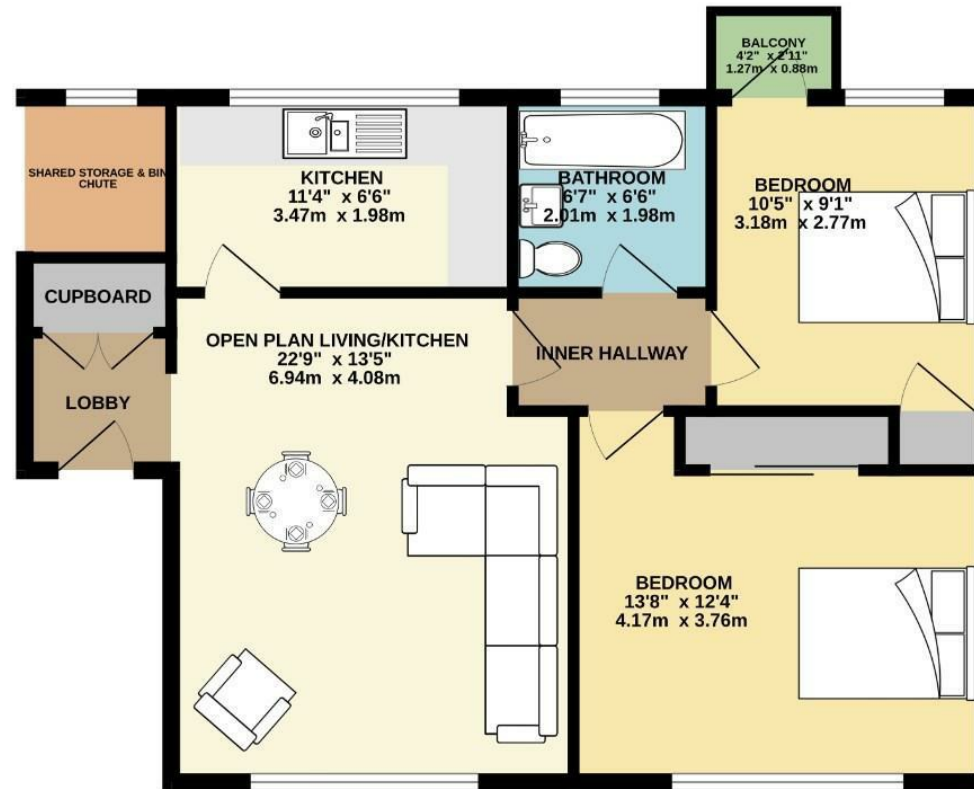
Floor Area - 685.00 sq ft

Local Authority - Manchester City Council

Council Tax - B



FIRST FLOOR
685 sq.ft. (63.6 sq.m.) approx.



TOTAL FLOOR AREA : 685sq.ft. (63.6 sq.m.) approx.
Measurements are approximate. Not to scale. Illustrative purposes only.
Made with Metrapix ©2025



These particulars are believed to be accurate but they are not guaranteed and do not form a contract. Neither Jordan Fishwick nor the vendor or lessor accept any responsibility in respect of these particulars, which are not intended to be statements or representations of fact and any intending purchaser or lessee must satisfy himself by inspection or otherwise as to the correctness of each of the statements contained in these particulars. Any floorplans on this brochure are for illustrative purposes only and are not necessarily to scale.

Offices also at: Wilmslow, Macclesfield, Hale, Sale, Chorlton, Glossop, Manchester & Salford

757-759 Wilmslow Road, Didsbury Village, Manchester

0161 445 4480

didsbury@jordanfishwick.co.uk
www.jordanfishwick.co.uk